

# HPCL Mittal Energy Limited- PSM Implementation



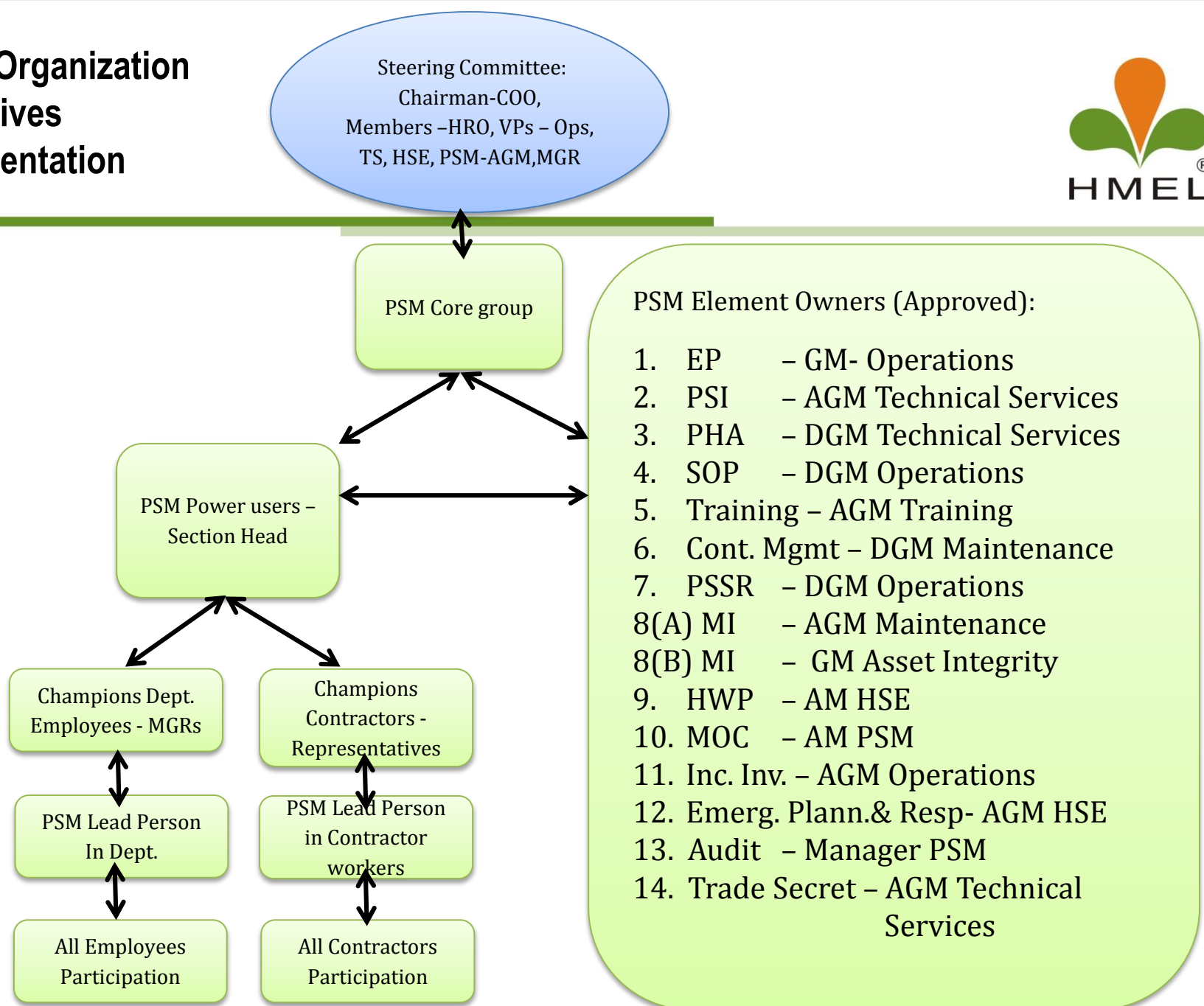
# How PSM was started at HMEL ?

## Background

Vision: Be the Best in All We Do

- Sour Water Tank Fire in April 2013
  - Good Personal Safety
  - Lack of Process Safety Focus
- Crafted PSM Department
  - Staffed
  - Developed PSM Roadmap
  - Leading Implementation
- Adopted US OSHA CFR 1910.110 as PSM basis

# PSM – Organization That Drives Implementation



# PSM -Three Year Plan



- PSM is implemented in three year plan.
- Year-1
  - Build Organization
  - Train the people
  - Identify gaps
  - Develop Full-fledged Plan

# PSM -Three Year Plan



- Year-2
  - Implementation of Plans to close Gaps
  - Embed PSM in People by Implementation and Training
  
- Year-3
  - Complete Implementation
  - Benchmark Globally
  - Identify Global Gaps
  - Make Plan to close Gaps

# Thank You